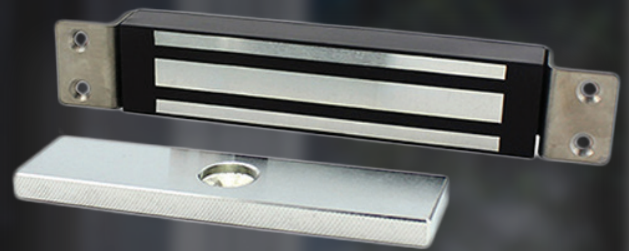


# AX-350SE

## Hidden Magnetic Lock

- Without door position detection output.
- Voltage:DC12V or DC24V.
- Holding Force: 180kg(350Lbs).
- Lock Size: 191L\*33W\*21H(mm).
- Armature Plate:130L\*32W\*8H(mm).
- Current Draw: 12V/480mA 24V/240mA.
- Suitable for fire exit door or out-swing door.

Weight: 1.2kg.



### Overview

AX-350SE single door embedded magnetic lock, specially used to normal glass door, wodden door, metal door, fire doors, small doors. Hoisting design, saves time and power when installation. Inward door, frameless glass door, narrow door all have a complete set of accessories. Special Anti-residual magnetic design makes automatic access control safer and more convenient.

### Features

- 1.Passed 350lbs super static linear tension tests.
- 2.Anti-residual magnetic design, keep constant tension.
- 3.Built-in reverse current protection device (MOV), performance stability ,safety coefficient is higher.
- 4.Wear materials, durable.
- 5.Electromagnetic suction work completely, there is no mechanical failure.
- 6.Shell with high strength alloy material, anode hardening treatment.
- 7.lock body with double insulation treatment.
- 8.Through the European CE and ROHS, MA certification in China.



## AX-350SE

## Hidden Magnetic Lock

### Specification

Model	AX-350SE
Holding Force	180kg (350lbs)
Lock Status Sensors	NO
Rated Operating Voltage	12/24VDC
Current consumption	500mA / 12V or 250mA / 24V
Optional Functions	Lock Status Sensors(NO,NC,COM)
Surface finish for magnet	Zinc plated
Surface finish for armature plate	Zinc plated
Ambient temperature in °C	-10~+55°C (14-131F)
Suitable for	Wooden , Aluminum , Glass , Fireproof & Metal
Magnets Dimensions (L x W x D)	170L*35W*21H(mm)
Armature Plate Dimensions (L x W x D)	130L*33W*9.3H(mm)
Weight in kg	1.3kg
CE-mark for building	Yes
Rohs-mark for building	Yes

### Related Images

