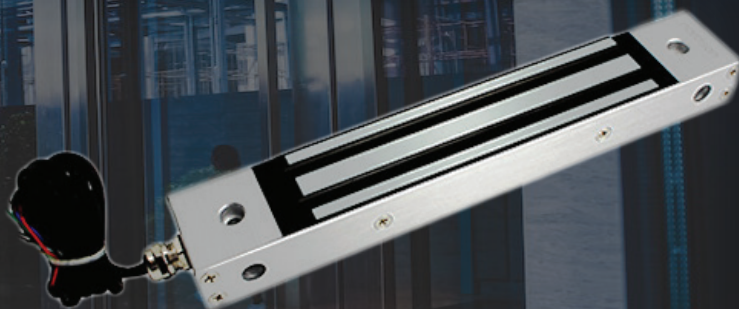


AX-350MSW

Waterproof Electromagnetic Lock

- Voltage:DC12V or DC24V.
- Waterproof IP68.
- Holding Force: 180kg (350Lbs).
- Lock Size: 220L*36W*21H(mm).
- Armature Plate:130L*33W*9.3H(mm).
- Current Draw: 12V/500mA 24V/250mA.
- With Timer & Buzzer Customization Available.



Overview

AX-350MSW single door 350Lbs Waterproof Electromagnetic Lock, specially used to out glass door, wooden door, metal door, fire doors, and all kinds of door. Hoisting design, saves time and power when installation. Inward door, frameless glass door, narrow door all have a complete set of accessories. Special Anti-residual magnetic design makes automatic access control safer.

Features

- 1.Wear materials, durable.
- 2.waterproof, whole sealing treatment.
- 3.Suitable for Indoor and outdoor.
- 4.Anti-residual magnetic design, keep constant tension.
- 5.Electromagnetic suction work completely, there is no mechanical failure.
- 6.Shell with high strength alloy material, anode hardening treatment.
- 7.lock body with double insulation treatment.
- 8.Through the European CE and ROHS, MA certification in China.
- 9.Waterproof,outdoor magnetic lock, passed 350lbs super static linear tension tests.
- 10.Built-in reverse current protection device (MOV), performance stability, safety coefficient is higher.



AX-350MSW

Waterproof Electromagnetic Lock

Specification

Model	AX-350MSW
Holding Force	180kg (350Lbs)
Waterproof grade	IP68
LED	NO
Lock Status Sensors	Dry contact NO, NC, COM
Rated Operating Voltage	12/24VDC
Current consumption	12V/500mA 24V/250mA
Optional Functions	Relock Delay Timer, Buzzer
Surface finish for magnet	Zinc plated
Surface finish for armature plate	Zinc plated
Ambient temperature in °C	-10~+55°C (14-131F)
Suitable for	Wooden & Aluminum & Glass & Fireproof & Metal
Magnets Dimensions (L x W x D)	220Lx36Wx21H (mm)
Armature Plate Dimensions (L x W x D)	130L*33W*9.3H (mm)
Weight in kg	1.3kg
CE-mark for building	Yes
Rohs-mark for building	Yes

