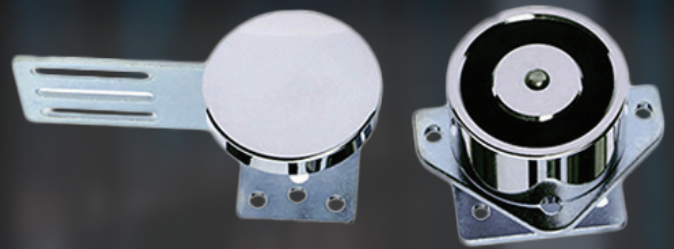


# AX-150BXP

## Automatic Door Magnetic Lock

- Holding Force: 70kg(150Lbs).
- Voltage: 12VDC+10% (24VDC need order).
- Current Draw: 12V/180mA 24V/120mA.
- Suitable for: Auto-door.
- Surface Treatment: High Temperature Paint and Environmental Protection Zin.
- Dimensions: 70L\*70W\*58H(mm).
- Armature Plate: 100L\*53W\*50H(mm).



### Overview

AX-150BXP, Automatic door magnetic lock with bracket, special used to Automatic door, storage cupboard. Hoisting design, saves time and power when installation. Automatic door all have a complete set of accessories. Special Anti-residual magnetic design makes automatic access control safer and more convenient.

### Features

1. Passed 150lbs super static linear tension tests.
2. Anti-residual magnetic design, keep constant tension.
3. Built-in reverse current protection device (MOV), performance stability, safety coefficient is higher.
4. Wear materials, durable.
5. Electromagnetic suction work completely, there is no mechanical failure.
6. Shell with high strength alloy material, anode hardening treatment.
7. lock body with double insulation treatment.
8. Through the European CE and ROHS, MA certification in China.



## AX-150BXP

## Automatic Door Magnetic Lock

### Specification

Model	AX-150BXP
Holding Force	70kg(150Lbs)
Lock Status Sensors	NO
Optional Functions	Relock Delay Timer,Buzzer
Rated Operating Voltage	12VDC (24VDC Customization Available)
Surface finish for magnet	Zinc plated
Surface finish for armature plate	Zinc plated
Ambient temperature in °C	-10~+55°C (14-131F)
Suitable for	Automatic door
Magnets Dimensions (L x W x D)	70L*70W*58H(mm)
Armature Plate Dimensions (L x W x D)	100L*53W*50H(mm)
Weight in kg	0.9kg
CE-mark for building	Yes
Rohs-mark for building	Yes
Current consumption	12V/180mA 24V/120mA

