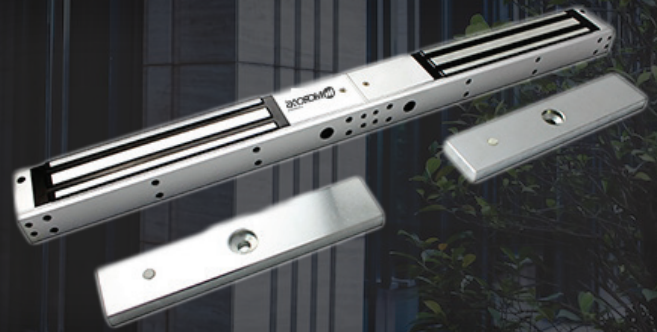


AX-120DLDT

Double Electromagnetism Lock

- LED display and door position detection output.
- Voltage:DC12V or DC24V.
- Current Draw: 12V/480mAx2 24V/240mAx2.
- Lock Size: 532L*67W*39H(mm).
- Armature Plate: 185L*60W*13H(mm).
- With Timer & Buzzer Customization Available.
- Weight: 5kg.



Overview

AX-120DLDT, double door magnetic lock, with door status signal output and led indicate, specially used to normal glass door, wooden door, metal door, fire doors, and all kinds of door. Hoisting design, saves time and power when installation. Inward door, frameless glass door, narrow door all have a complete set of accessories. Special Anti-residual magnetic design makes automatic access control safer and more convenient.

Features

1. With the door status signal output, passed 2x1200lbs super static linear tension tests.
2. Anti-residual magnetic design, keep constant tension.
3. Built-in reverse current protection device (MOV), performance stability, safety coefficient is higher.
4. Wear materials, durable.
5. Electromagnetic suction work completely, there is no mechanical failure.
6. Shell with high strength alloy material, anode hardening treatment.
7. Lock body with double insulation treatment.
8. Through the European CE and ROHS, MA certification in China.



AX-120DLDT

Double Electromagnetism Lock

Specification

Model	AX-1201DLDT	AX-1202DLDT
Holding Force	2x500kg (1200Lbs)	
Lock Status Sensors	Dry contact NO,NC,COM	
Optional Functions	LED, Buzzer	LED, Relock Delay Timer
Rated Operating Voltage	12/24VDC	
Surface finish for magnet	Zinc plated	
Surface finish for armature plate	Zinc plated	
Ambient temperature in °C	-10~+55°C (14-131F)	
Suitable for	Wooden, Aluminum, Glass, Fireproof & Metal	
Magnets Dimensions (L x W x D)	532Lx67Wx39H (mm)	
Armature Plate Dimensions (L x W x D)	185Lx60Wx13H (mm)	
Weight in kg	5kg	
CE-mark for building	Yes	
Rohs-mark for building	Yes	
Current consumption	12V/480mA 24V/240mA	
Lock Status Indicator	Red and Green, double color LED	
Function	With Buzzer	0, 3, 6, 9 sec Time delay

Related Images

