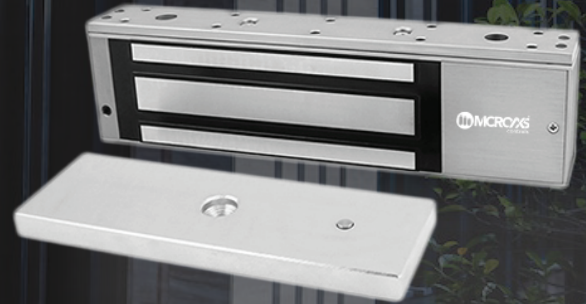


AX-1200DSB

Electromagnetic Lock With Timer

- With delay and signal output.
- Voltage:DC12V or DC24V.
- Waterproof IP65 Customization Available.
- Current Draw: 12V/500mA 24V/250mA.
- LED indicates the door is unlock,Green indicates the door is lock.
- Time: 0/3/6/9sec.
- No residual magnetism, no mechanical damage 90 degrees open for all kinds of doors with frame With Buzzer Customization Available.



Overview

AX-1200DSB, single door 1200 lbs electromagnetic lock with timer, with the door status signal output, time delay and led indicate, specially used to normal glass door, wodden door, metal door, fire doors, and all kinds of door. Hoisting design, saves time and power when installation. Inward door, frameless glass door, narrow door all have a complete set of accessories. Special Anti-residual magnetic design makes automatic access control safer.

Features

- 1.With the door status signal output, passed 1200lbs super static linear tension tests.
- 2.Anti-residual magnetic design, keep constant tension.
- 3.Built-in reverse current protection device (MOV), performance stability , safety coefficient is higher.
- 4.Wear materials, durable.
- 5.Electromagnetic suction work completely, there is no mechanical failure.
- 6.Shell with high strength alloy material, anode hardening treatment.
- 7.Lock body with double insulation treatment.
- 8.Through the European CE and ROHS, MA certification in China.



AX-1200DSB

Electromagnetic Lock With Timer

Specification

Model	AX-1200DSB
Holding Force	600kg (1200Lbs)
Lock Status Sensors	Dry contact NO,NC,COM
Optional Functions	Buzzer
Rated Operating Voltage	12/24VDC
Surface finish for magnet	Zinc plated
Surface finish for armature plate	Zinc plated
Ambient temperature in °C	-10~+55°C (14-131F)
Suitable for	Wooden , Aluminum , Glass , Fireproof & Metal
Magnets Dimensions (L x W x D)	265Lx71Wx40H (mm)
Armature Plate Dimensions (L x W x D)	185Lx60Wx13H (mm)
Weight in kg	4.5kg
CE-mark for building	Yes
Rohs-mark for building	Yes
Current consumption	12V/600mA 24V/300mA
Lock Status Indicator	Double color LED, Red and Green
Relock Delay Timer	0,3,6,9 seconds open time delay is adjustable

Related Images

