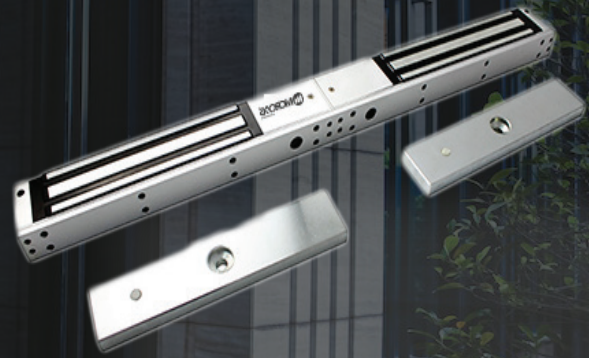


# AX-1200DLD

## 1200Lbs Electromagnetic gate lock

- LED display and door position detection output
- Voltage:DC12V or DC24V
- Current Draw: 12V/480mAx2 24V/240mAx2
- Lock Size:532L\*67W\*39H(mm)
- Armature Plate:185L\*60W\*13H(mm)
- Buzzer Customization Available
- Weight: 5kg



### Overview

AX-1200DLD, double door magnetic lock, with the door status signal output led indicate and timer, specially used to normal glass door, wodden door, metal door, fire doors, and all kinds of door. Hoisting design, saves time and power when installation. Inward door, frameless glass door, narrow door all have a complete set of accessories. Special Anti-residual magnetic design makes automatic access control safer

### Features

- 1.With the door status signal output, passed 2x1200lbs super static linear tension tests.
- 2.Anti-residual magnetic design, keep constant tension.
- 3.Built-in reverse current protection device (MOV), performance stability, safety coefficient is higher.
- 4.Wear materials, durable.
- 5.Electromagnetic suction work completely, there is no mechanical failure.
- 6.Shell with high strength alloy material, anode hardening treatment.
- 7.Lock body with double insulation treatment.
- 8.Through the European CE and ROHS, MA certification in China.



## AX-1200DLD

## 1200Lbs Electromagnetic gate lock

### Specification

Model	AX-1200DLD
Holding Force	2x600kg (1200Lbs)
Lock Status Sensors	Dry contact NO,NC,COM
Optional Functions	Relock Delay Timer,Buzzer
Rated Operating Voltage	12/24VDC
Surface finish for magnet	Zinc plated
Surface finish for armature plate	Zinc plated
Ambient temperature in °C	-10~+55°C (14-131F)
Suitable for	Wooden, Aluminum, Glass, Fireproof & Metal
Magnets Dimensions (L x W x D)	530Lx71Wx40H(mm)
Armature Plate Dimensions (L x W x D)	185Lx60Wx13H(mm)
Weight in kg	9.0kg
CE-mark for building	Yes
Rohs-mark for building	Yes
Current consumption	12V/600mA 24V/300mA
Lock Status Indicator	Double color LED,Red and Green

### Related Images

